


# Woodland Wildlife

## Fact Cards - Minibeasts (A5)

These fact cards can be used as part of a display or as a stimulus for discussion, writing and drawing before or after time spent in a woodland setting.

**Ladybird**




**Length:**  
Up to 1cm

**Food:** Aphids and other small insects.

**Fact:** Ladybirds pretend to be dead when they are threatened.

© 2021 Little Owls Resources

**Bumblebee**



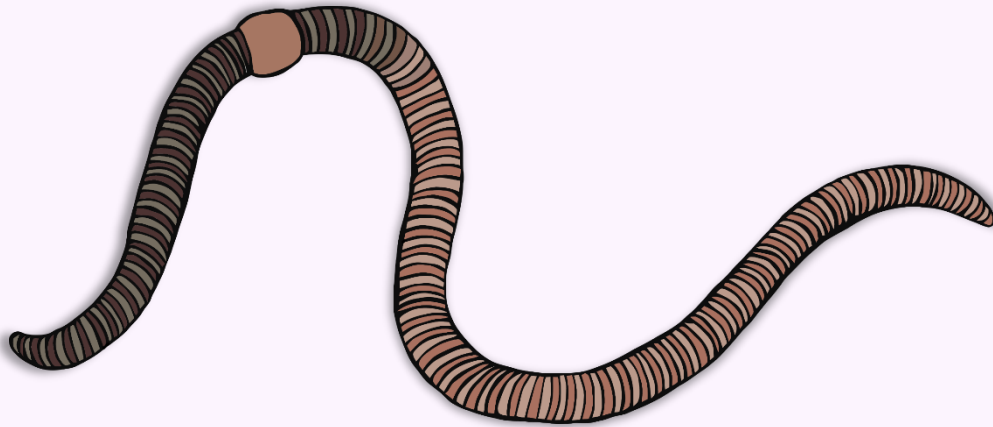
**Length:**  
Up to 2cm

**Food:** Nectar and pollen from flowers.

**Fact:** Very important in helping to spread pollen from flower to flower.

© 2021 Little Owls Resources

# Earthworm



**Length:**

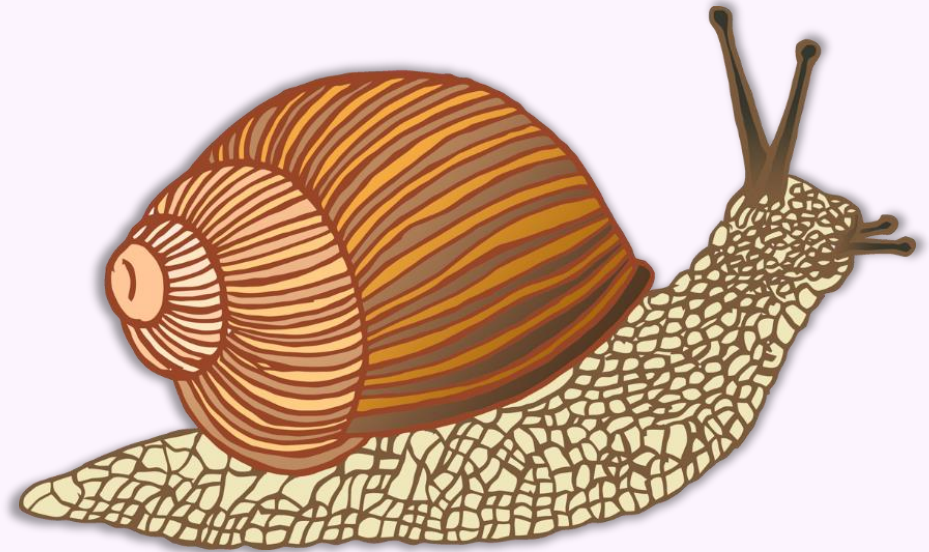
Up to 35cm

**Food:**

Nutrients in soil.

**Fact:** Worms help to make soil ready for plants to grow successfully.

# Garden Snail



**Length:**

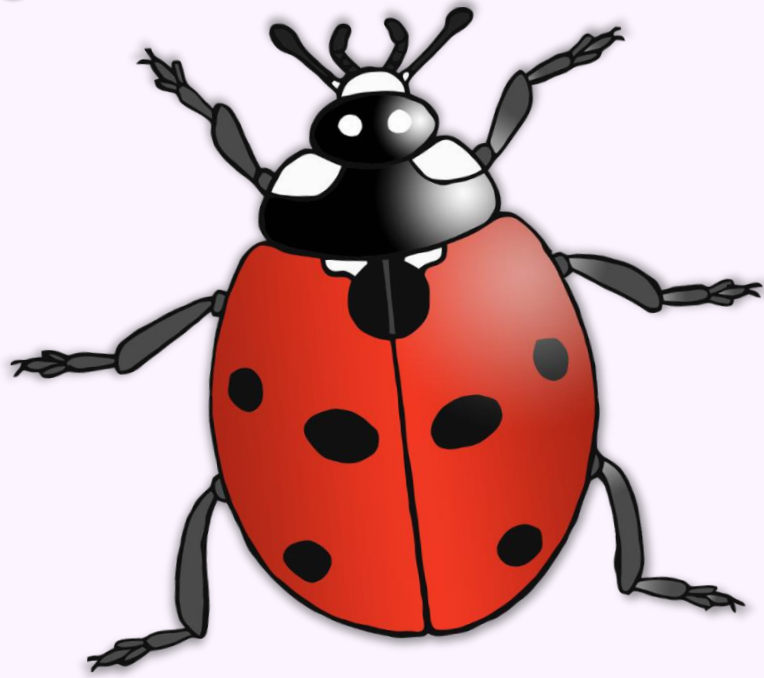
Up to 3-4cm

**Food:**

Seedlings,  
small plants.

**Fact:** Snails can carry ten times their body weight.

# Ladybird

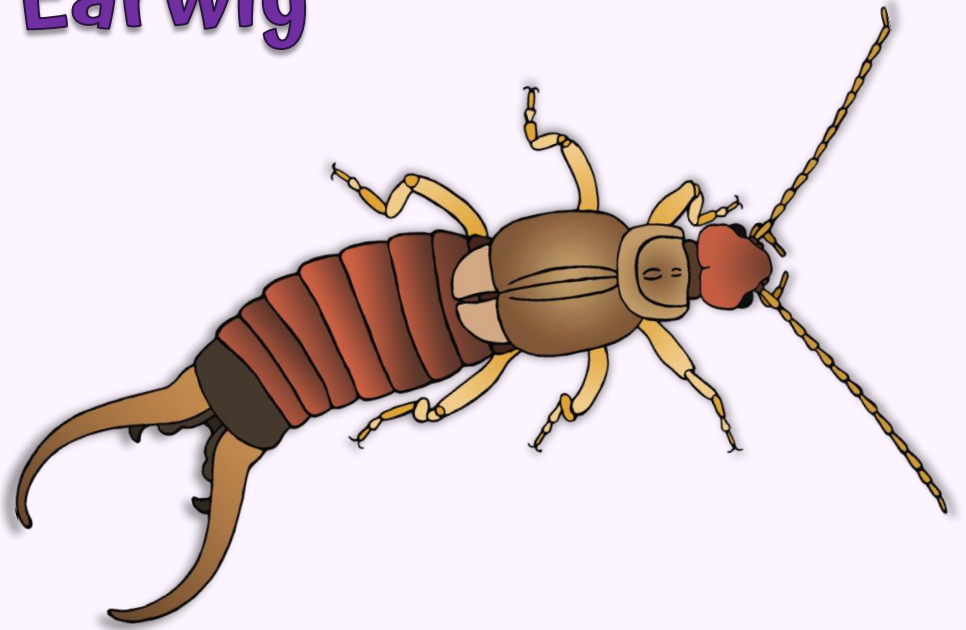


**Length:**  
Up to 1cm

**Food:** Aphids and other small insects.

**Fact:** Ladybirds pretend to be dead when they are threatened.

# Earwig

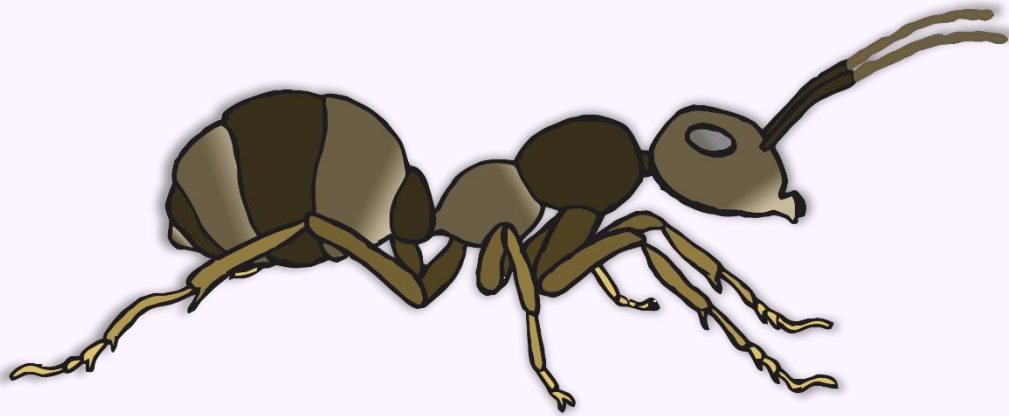


**Length:**  
Up to 1.5cm

**Food:** Small plants, flowers, and insects.

**Fact:** Earwigs have wings but hardly ever fly.

# Ant



**Length:**

Up to 0.5cm

**Food:**

Almost anything!

**Fact:**

Ants can carry FIFTY times their own body weight!

# Bumblebee



**Length:**

Up to 2cm

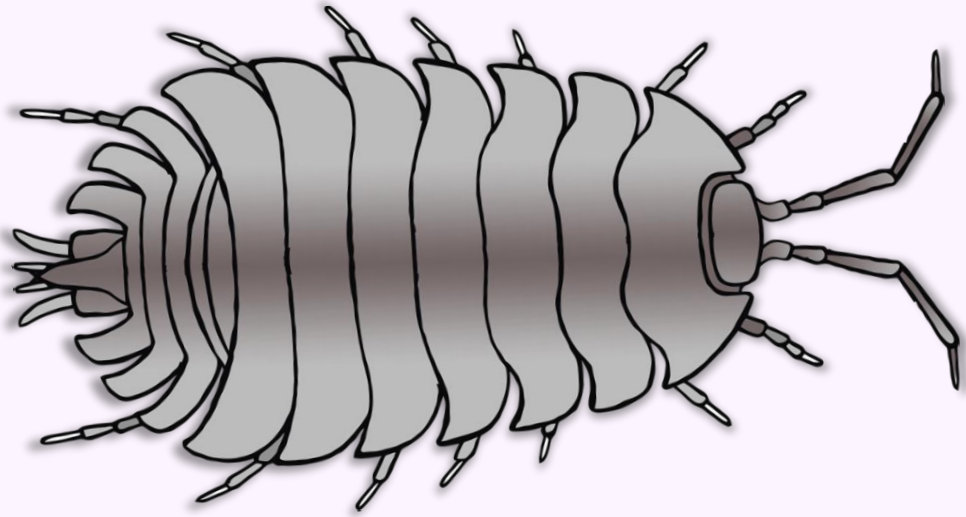
**Food:**

Nectar and pollen from flowers.

**Fact:**

Very important in helping to spread pollen from flower to flower.

# Woodlouse

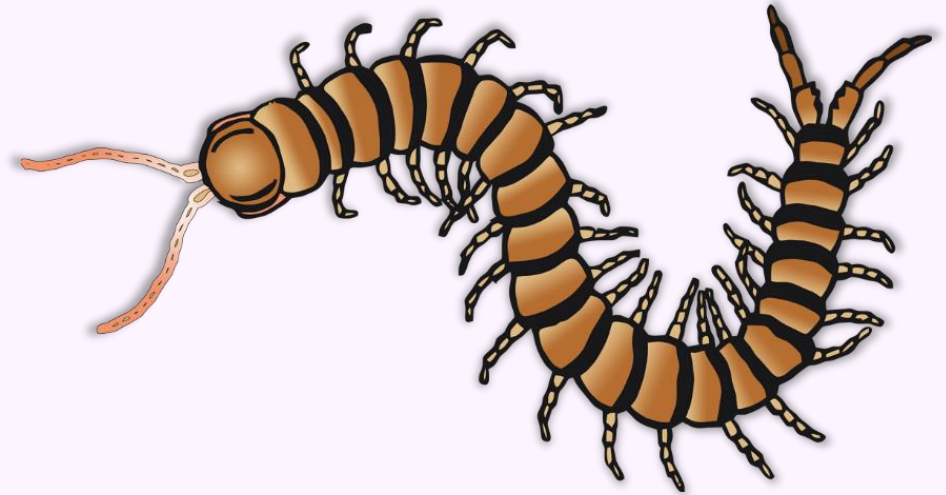


**Length:**  
Up to 1.5cm

**Food:**  
Old wood, leaves, fruit,  
and dead insects.

**Fact:**  
Related to shrimps and crabs.

# Centipede

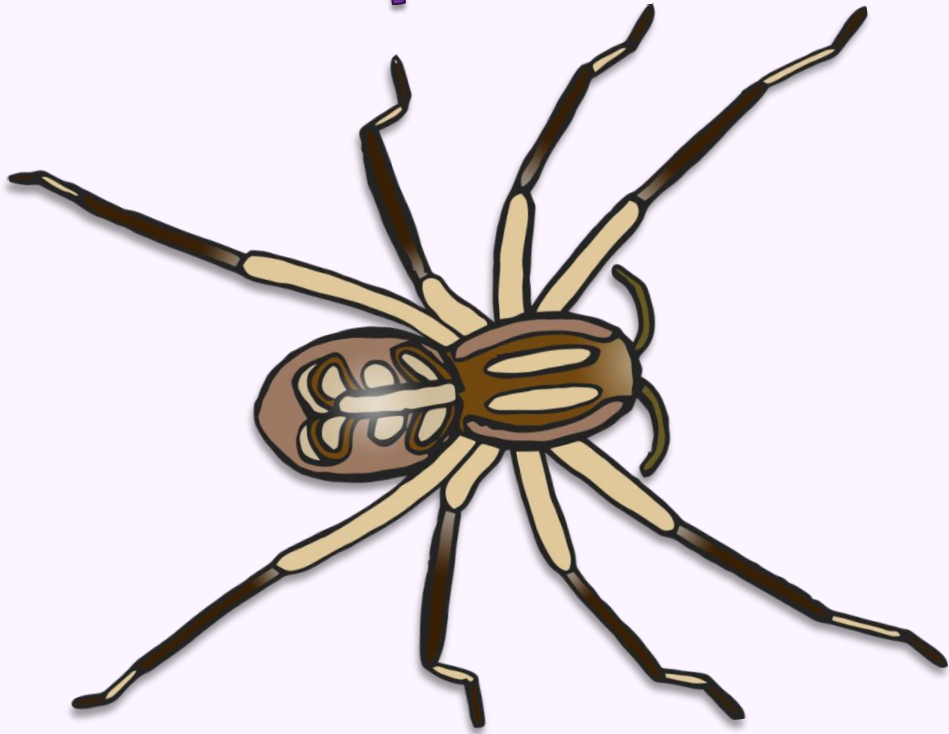


**Length:**  
Up to 3cm

**Food:** Small insects,  
worms, and slugs.

**Fact:**  
Centipedes hunt for  
food at night.

# Garden Spider



**Length:**

Up to 1.5cm

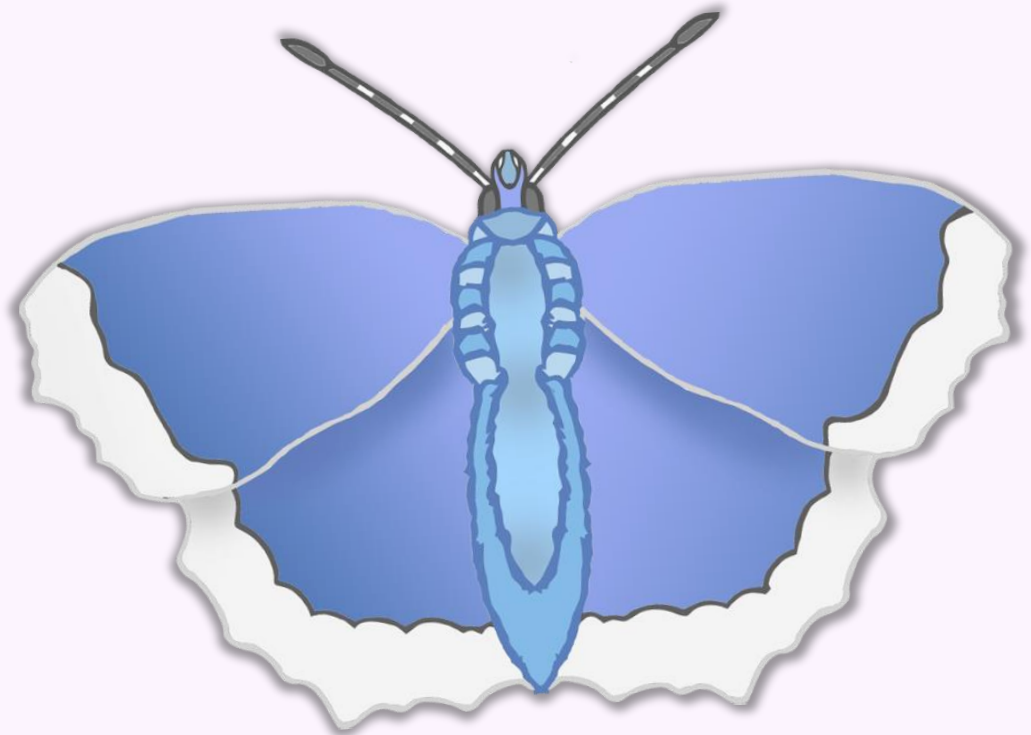
**Food:**

Flying insects.

**Fact:**

The main predator of garden spiders are birds.

# Common Blue Butterfly



**Size:**

Up to 3.5cm  
wide.

**Food:**

Nectar flowers.

**Fact:**

Most likely to see them from  
May until October.